

Pressemitteilung / Press Release



Label printing 'eXtra4-win4' now ready to go **Industry software for jewellers and goldsmiths available as new major release**

Birkenfeld, 29 January 2026. After ten years, label specialist Ferdinand Eisele is launching a new major version of his label printing programme for jewellery and watches through his subsidiary eXtra4 Software + Service GmbH: With 'eXtra4-win4', the Pforzheim-based company is taking its globally distributed industry software 'eXtra4-win3' to a future-proof level. The major release builds on the latest Windows system architecture. Its three editions offer a more intuitive workflow with a contemporary look and aim to make the unpopular task of labelling as pleasant as possible for jewellers, goldsmiths and the industry. Interested parties can find 'eXtra4' during the Inhorgenta trade fair in Munich at its new location, Stand 222, in Hall C2.

Back to the Roots

Functional overkill tends to make life difficult for software users.

Years of continuous development have resulted in an accumulation of features that threaten to obscure the actual core of the application.

The new label printing software 'eXtra4-win4' therefore brings the shortest route to a printed label back into focus. The basis remains ready-to-use label designs in the cloud-based layout library. The programme is limited to three paid editions, instead of the five in the previous version 'eXtra4-win3', focuses exclusively on single-user solutions and uses the proven SQLite database.

Get started for free –

grow from edition to edition with a one-time fee

With the free downloadable demo version, you can test all editions of 'eXtra4-win4' across their entire range of functions. Even labels can be printed, but the trial version does not allow professional work.

The simplest paid edition, 'Lite', offers label printing in 'Type'n'Print' mode: users can select a label design from the layouts that match their label shape, enter data on the screen into the layout file's input mask, specify the print run and print the labels. This programme level alone enables users to operate multiple printers with different labels and layouts.

The next higher edition, 'Basic', expands these options to include database access. Those who use it want to permanently store label data once it has been entered, organise it according to the

corresponding item and retrieve it again as needed. Supplemented by a small image and a comment text, this allows you to build up a simple article master, which is structured into article groups and can be output as a list.

The current highest configuration level of 'eXtra4-win4', Edition 'Connect', integrates data from external sources for label printing. 'Connect' is aimed at users who already maintain their items in other applications, e.g. a stock management system, a web shop or with "Excel". Data exported in CSV or XML format from these programmes can be processed into label data and printed by 'eXtra4-win4'. High levels of complexity beyond the standard scope are resolved individually during data transfer using script technology.

The price of each edition includes an appropriate support package, which enables users, if necessary, to install the software on site with the help of the 'eXtra4' professionals and start printing labels immediately. In order to keep costs transparent, 'eXtra4-win4' deliberately avoids a subscription model, instead charging a specific one-off amount per edition. Support beyond the initial credit can also be purchased later as a ticket with defined units.

Ease of use without sacrificing depth

The extensive functions of the programme are presented in a streamlined and reprioritised form in 'eXtra4-win4'. The majority of users should be able to quickly achieve their basic needs, but

professional-level requirements must not be ignored. Special solutions are now reorganised in lower operating levels, which must be deliberately sought out, or are only integrated individually on request using script technology. One example of this is serial printing, a feature that can handle high levels of complexity but is only needed by a small number of users. Serial printing is now available as a separate module, removed from the general item list. If you want to combine labels for multiple items with different layouts and different print runs in a single print job and also need to control their output to different printers, you will find all the configuration controls clearly summarised there. Organised in this way, the option does not overload the user interface for the majority of users, while at the same time improving usability for users with demanding requirements.

Stable thanks to adaptation to Windows system architecture

Operating system updates every 14 days are now part of everyday life for Windows users. The rapid development of the operating system with security restrictions is putting programmes based on Windows under pressure. Users can be confronted with a crash from one second to the next. To avoid such situations, the major release 'eXtra4-win4' closely follows the current Windows specifications: Whereas the previous version, 'eXtra4-win3', was installed entirely in the computer's main directory, 'eXtra4-win4' is distributed across various subdirectories. Particular attention should be paid to the

separation of data and executable subprogrammes. With its new main version 'win4', 'eXtra4' label printing considers itself well equipped for the future and strives to win over more customers worldwide as industry software for labelling jewellery and watches.

(5.569 characters including spaces)

Images with captions



Fig. 1: Label printing software now available as main release 'eXtra4-win4'

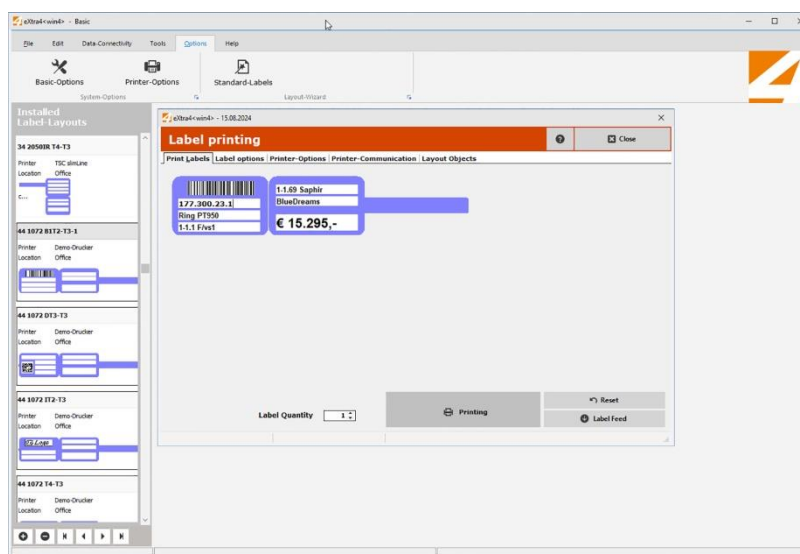


Fig. 2: The completed input mask for a label layout with barcode in the label printing software 'eXtra4-win4'

Item-No.	Picture	Item-C	Label	Layout	Text 1	Text 2	Text 3	Text 4	Text 5	Text 6
11000001		1100	0	34 2050IR-L T4-T3	Zeppelin	HORIZON	Mod. 6792	Stahl	10 atm WaDi	
11110003		1111	0	34 2050IR-L T4-T3	1111100	ETA Valjoux 77	mech. self-wind	27 Jewels	stainless steel	Dia. 42mm
11220001		1122	0	34 2050IR-L T4-T3	SKAGEN	BreakIce	SKW2693	Edelstahl gold	30 mm - analog	Wasserdicht 3bar
21210001		2121	0	34 2050IR-L T4-T3	21210001	Christian Dior	Simplicity	375/- GG 1,5gr	58	Stärke 2,5 mm
21220001		2122	0	34 2050IR-L T4-T3	21220001	Christian Dior	Solitär	585/- GG pol.	Wt 52	Dia 0.15ct
23120001		2312	1	34 2050IR-L T4-T3	23120001	Wt. 17.5	1234/45-6			
31210001		3121	0	34 2050IR-L T4-T3	31210001	ChaineFavour	Simplicity	YG 14ct polished	50 cm	0.7 mm / 2.6 mm W

Fig. 3: Item list with label printing data in the 'eXtra4-win4' software from the 'Basic' edition onwards



Fig.4: Logo eXtra4 Software + Service GmbH